



KX-NT400 EXECUTIVE IP TELEPHONE BROCHURE

EVERY  
**CALL**  
MATTERS



EVERY  
CALL  
MATTERS

# INNOVATIVE STYLISH EXECUTIVE



Panasonic KX-NT400 is an innovative and stylish high-end Executive IP telephone for the KX-NCP and KX-TDE communication platforms. Intuitive Graphical User Interface (GUI), touch-screen and a large colour display make the KX-NT400 Executive IP telephone highly user-friendly. The NT400 also comes with built-in Communication Assistant compact edition giving users quick and easy access to unified communications.

## ▶ KX-NT400 - KEY BENEFITS

**Presence** - See quickly who is available, and make contact at the touch of a button.

**Enhance Productivity** - Easily collaborate with team members from local or remote locations. Use instant messaging to easily chat with other NT400 or Communication Assistant users - using quick messages.

**Efficiency** - the directory integrates all your contacts into one single directory for fast and efficient communication.

**Keep in Contact** - users can easily access incoming, outgoing and missed call details and can quickly return calls from the Call Log Screen, helping to easily stay in touch with customers and avoid any potential loss of business opportunity.

**Flexibility** - the Call Control Screen allows users the added flexibility to control calls. Intuitive touch screen operation allows users to easily perform all operations - such as transferring a call, placing a call on hold or even recording a call.

**Monitor your surroundings** - Use the Camera Viewer Screen to monitor up to 20 registered cameras in areas such as reception, corridors, office or warehouse, ensuring that you always know what is happening in your premises.

**User-Friendly** - Large, colour touch screen interface enables quick and easy operation. Users can also receive incoming call pop up notifications for added convenience.

**Fast Communication** - Chat enables fast text based communication through the KX-NT400 touch screen using an on screen virtual keyboard, or an optional external USB keyboard.

**Access Intranet Applications** - The NT400 is HTML enabled - allowing quick access to business web applications which are run on a company's intranet.

**Door Phone with Camera Integration** - Network camera integration with a door phone allows added security, as employees can monitor and control access to office premises. A maximum of 20 door phones can be integrated.



### ▶ WHO WOULD USE KX-NT400 EXECUTIVE IP TELEPHONE?

The KX-NT400 is a Unified Communication Application device, designed to enhance business communications. The unit offers a practical communications solution in locations where a PC is not required. Thanks to its Intranet functionality, users can easily access business applications running within the corporate network. This stylish, high-end IP telephone boasts many features that make it suitable for use in many industries, including hospitality, travel, retail, contemporary offices and call centres.

### ▶ CONTEMPORARY OFFICES - EXECUTIVES, TEAM LEADERS, MANAGERS AND DIRECTORS.

Access real-time business information, check colleagues' availability and monitor call handling performance, such as number of calls missed or total number of calls handled. Gain quick access to business data without the need of a PC.

### ▶ TRAVEL - AIRPORT, TRAIN STATIONS AND BUS/COACH STATIONS.

With appropriate business web applications developed by 3rd parties - NT400 can be deployed in businesses where it can be used to check travel schedules, transport delays, order tickets and get up to the minute weather updates.

### ▶ RETAIL - SUCH AS DEPARTMENT STORES AND DESIGNER BOUTIQUES.

The KX-NT400 can be deployed in businesses where it can be used to check stock levels, delivery dates and the status of customer orders. Monitor shoppers within the store with the network camera integration.

Chat (Instant Messaging)



Bluetooth Headset



Panasonic Network Camera



Network Camera

Contacts (Presence enabled)



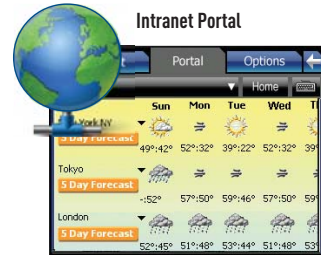
KX-NT400



Door Phone Opener



Intranet Portal



Touch Screen LCD

Applications built-in

Incoming Ringing/  
Message Waiting LED

SD Card Slot

USB Port

Speakerphone

Easy Navigation Key



## ▶ CHAT (INSTANT MESSAGING).

Chat allows NT400 users to send and receive short text based messages.

- Make it easy to contact someone – even if they are busy on a phone call.
- Two-way chat works between NT400 and CA logged in users.
- Escalate from a Chat to a Call Directly from the Chat Window, saving time.

## ▶ CONTACTS (PRESENCE ENABLED).

The NT400 is an executive IP telephone designed to access and display presence information.

- View the presence and availability of a colleague before calling them.
- Change presence status in 2 clicks.
- Create Custom status information e.g. On holiday, on a business trip.

## ▶ NETWORK CAMERA

Network cameras allow NT400 Users to monitor their surroundings.

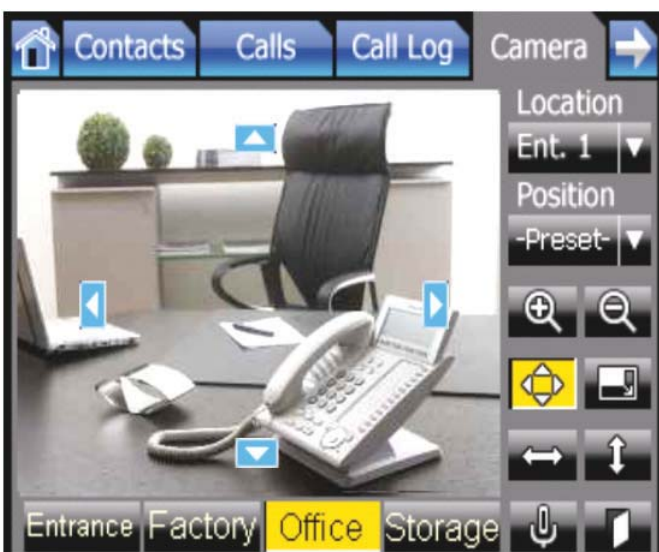
- One-touch Access to Network Cameras (up to 20).
- Motion JPEG & MPEG4 CODEC are supported
- Network Camera Control: Tilt, Pan, Touch & Centering and Zoom.

## ▶ INTRANET PORTAL

The Portal Screen is used to access intranet based business applications.

- Intranet based custom applications
- Company Photo Phonebook
- Company Restaurant “Today” Menu
- Company Calendar

HTML Web applications can be developed by 3rd party software developers.



### MAKE CAMERA CONTROL EASY

- ← Select Camera
- ← Preset Options
- ← Pan or Tilt View
- ← Remotely Open Door



[www.panasonic.co.uk](http://www.panasonic.co.uk)

EVERYTHING MATTERS

# KX-NT400 EXECUTIVE IP TELEPHONE

Panasonic KX-NT400 is an innovative and stylish executive IP telephone for the KX-NCP and KX-TDE communication platforms. As an Applications device the KX-NT400 IP telephone is extremely user-friendly thanks to its large, colour, touch screen interface and built-in Communication Assistant - compact software, allowing users quick and easy access to unified communications.

The KX-NT400 Graphical User Interface (GUI) is highly intuitive and information is grouped and divided into logical tabs for ease of use.



## ▶ MAIN SCREEN

Users can access many key features from the Home screen including presence settings, call forward and do-not-disturb (DnD) settings, time display, access voicemail, new messages waiting, missed calls, feature key, application lock, ringer off setting, mute, speakerphone and bluetooth® module.



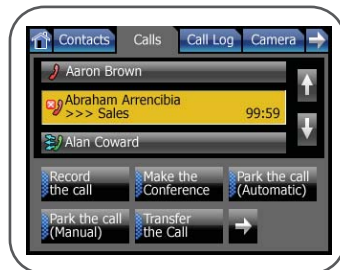
## ▶ FEATURE KEY SCREEN

Quickly access up to 48 line appearance of users, access information, system features and account codes. Change ringing volume and tone.



## ▶ CALLS SCREEN

The Calls screen shows currently connected calls and context sensitive call control functions that can be used for each call, depending on the call status. These functions include common features such as ability to record a call, make a conference call, park a call and transfer calls etc.



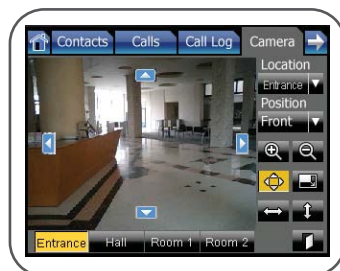
## ▶ CONTACTS SCREEN

Make it easy to contact people, with key features including search for a contact, make a call, start chat, dial using keypad, as well as add, edit or delete a contact. Users have three ways to enter information, either with the virtual soft keyboard on the screen, the 12 keys on the phones keypad or via an optional external USB keyboard.



## ▶ CAMERA SCREEN

The Camera Viewer works with a network camera from Panasonic's KX-HCM or BL-C Series. Users can access many key features from this screen, such as zoom, tilt and pan, view preset, touch and centring, door phone and door opener, still picture recording and viewing, directory integration and register and delete network cameras.



## ▶ INTRANET PORTAL SCREEN

The Intranet Portal Screen allows users to access business web applications on the company intranet and navigate with a stylus pen. Key features include a home button, pull down menu for up to 50 URLs and the ability to make calls.



## CALL LOG SCREEN

The Call Log Screen provides incoming, outgoing and missed call log functions. The key features available from this screen include making a call from the incoming, outgoing and missed calls log, add a contact to the Personal Directory, display details of contacts and view saved images from a network camera.



## OPTIONS SCREEN

The Options Screen provides setting and maintenance features for the user and administrator. User options allow users to change key features, such as their password, display, call alert pop-up, dial number and language. Administrator option features allow administrators to access the network, directory server (LDAP), dial modification, maintenance and programming.

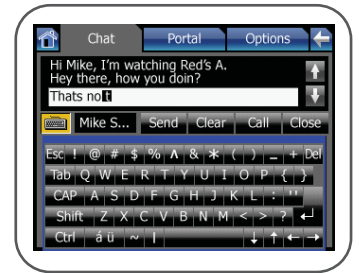


## SPECIFICATIONS

CATEGORY	ITEM	KX-NT400
IP Related	Signalling Protocol	PCC proprietary protocol (MGCP based) for Telephony
	Voice CODEC	G.711, G.729A, G.722
	IP Addressing	Static & DHCP
	QoS	VLAN & DiffServ
	Jitter Buffer Size	Up to 200msec (Default)
Telephone Features	VoIP Security	Panasonic Proprietary
	LCD	5.7" DVGA TFT 65,000 colours W/Touch Screen & Backlight
	SP Phone	Yes
	Message/Ring Lamp	Dual-coloured LED (Green & Red)
Applications	Ringer Tone	8
	Melody Ringer	10 titles
	Operating System	Windows CE Ver.5.0 Pro
	Network Camera Integration	Yes
	Camera View	Motion JPEG 10fps
	Frame Rate	MPEG4 15fps
	Browser	For intranet access & Web application for business: - HTML HTML 4.01 Supports tables, forms and frames - Scripting JScript 5.5 (ECMA-262 compliant)
	Presence (Absent Message)	Yes
	Directory	- Contacts: 300 entries - Extension Directory - System Speed Dial
	Corporate Directory Access	Simple database integration by LDAP (Ver.3)
	Call Log	- Incoming Calls: 100 - Outgoing Calls: 100
	API for External Software Control	HTML
	Application Lock	Protects private information from others. Password required for cancelling Application Lock. When Application Lock is on, Home Screen, Feature Key Screen, Call Control Screen and Options Screen (partially) can be displayed. Telephone feature is always available.
Activation Key	IP-PT	IP Proprietary Telephone Activation Key is required
	Application	No activation key required, but the total number of CA Pro users is adjusted

## CHAT SCREEN

The Chat Screen allows users to send and receive short text based messages. There is the option to use the virtual soft keyboard or the 12 keys on the phones keypad for entering alphanumeric characters. The Chat Screen allows users to store up to 2000 messages



## ADDITIONAL FEATURES

**48 Self Labelling Programmable Soft Keys** - for easy call handling.

**Easy Navigation Key** - A large, easily accessible navigation key allows fast, one touch access to multiple phone system functions. The ergonomically designed navigation key makes it easy to go through phone system feature menus.

**Bluetooth® Module** - for effortless wireless headset communication.

**2nd Ethernet Port** - helping your business save costs and reduce desktop clutter by allowing connection from the phone into the PC, rather than the added cost of two cables back to the network switch.

**Built-in Headset Jack** - for handsfree communication.

**Power over Ethernet (PoE)** - allows easy installation, as PoE enables data and electrical power to be transmitted over a single Ethernet cable, rather than two separate cables.

CATEGORY	ITEM	KX-NT400
Interface	USB	USB 1.1 - One USB host port for USB keyboard USB low power device only
	SD Slot	Support Panasonic SD Card (32MB to 2GB)
	Bluetooth	Supports optional Bluetooth module for Bluetooth Headset connection Data communication is not supported
	Primary Ethernet	10/100Base-TX
	Secondary Ethernet	10/100Base-TX
	Keyboard Support	Software keyboard on LCD Commercially available USB Keyboard (To be used to enter characters of setting function and chat etc)
	Headset Connection	2.5mm Jack
Adjustment	Handset/Headset Volume Control	4 Steps
	Speakerphone Volume	12 Steps
	Ringer Volume Control	5 Steps (H-M-L-UL-OFF)
	Touch Panel Tone ON/OFF	Yes
	LCD/LCD OFF Timer	Reduces power of LCD and LCD backlight to save power consumption and extend the life of LCD.
Maintenance	LCD Brightness	5 Levels
	LCD Calibration	For touch screen calibration
	Programming for PBX	System Programming, Station Programming
	Programming for NT400	Local Programming
	Firmware Upgrade	From SD card or FTP server
	Data backup	All system data including application data. Data backup by SD card
General	Power Supply	AC Adapter and Power over Ethernet (IEEE802.3af compliant)
	Stylus Pen	Included
	Wall mount	Yes
	Tilt	Yes, 7 Steps (30 to 60°)
	Languages	German, French, Italian, Spanish Portuguese, English, Russian, Ukrainian Other languages available through PBX programming
	Operating Temperature	0-40 °C